



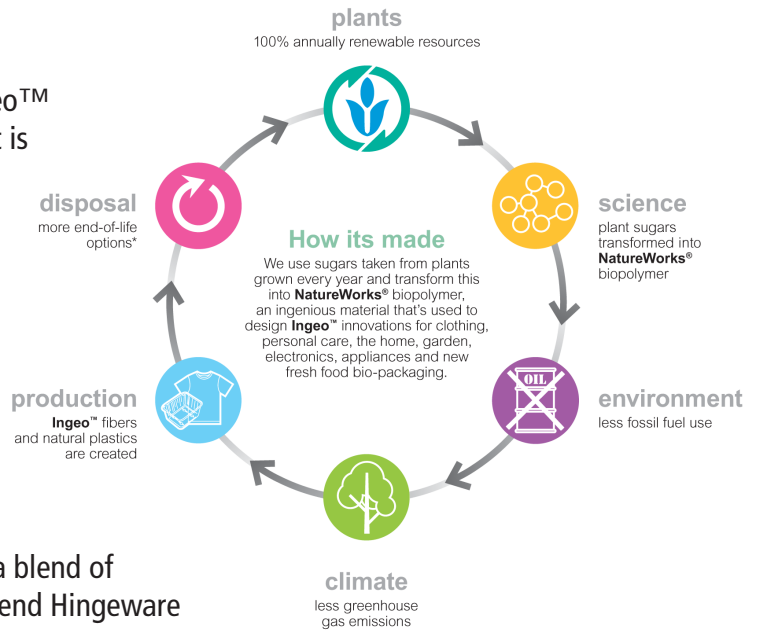
EarthChoice® Products

Material Resources



PLA (Polylactic Acid)

PLA is a natural plastic material called Ingeo™ which is made from plants instead of oil. It is 100% annually renewable. Because PLA is a natural material, it is best used for cold applications and has a heat tolerance of 105° F. All Pactiv PLA products are **ASTM D 6400** certified and compostable.*



Fiber Blend Hingeware

Pactiv's Fiber Blend Hingeware is made of a blend of pulp fibers. All the materials in the Fiber Blend Hingeware are made from sustainable, renewable resources and are **ASTM D 6868** certified, compostable, and processed chlorine free.*



Bagasse Blend Tableware

The Bagasse Blend Tableware is a fiber (paper) material that is made of a blend of Bagasse (Sugar Cane) and Bamboo which are sustainable and annually renewable resources. Pactiv's Bagasse Blend Tableware is **ASTM D 6868** certified and compostable.*



PSM (Plastarch Material)

PSM is manufactured from starch and a blend of several other materials. Approximately 70% of the base material comes from a starch that is modified in order to obtain heat resistant properties. Since PSM is derived from corn, which is an annually renewable resource, this material can handle temperatures up to 200° F making it perfect for higher heat applications.



TFPP (Talc-Filled Polypropylene) - TFPP contains an average of 40% less plastic polymers than standard polypropylene containers which reduces plastic usage.



RPET (Recycled Polyethylene Terephthalate) - PET is made primarily from natural gas feedstock, whereas RPET is produced from previously used post consumer/post industrial plastic products. Pactiv uses a minimum of 25% recycled content in RPET packaging.

*Disposable compostable products are recommended only for industrial or municipal compost facilities. For a complete list of facilities near you visit www.findacomposter.com



NatureWorks, Ingeo and the Ingeo logo are trademarks or registered trademarks of NatureWorks LLC in the USA and other countries. For more information regarding Ingeo™ visit www.natureworkspla.com



EARTHCHOICE® TFPP SmartLock® Hinged Lids



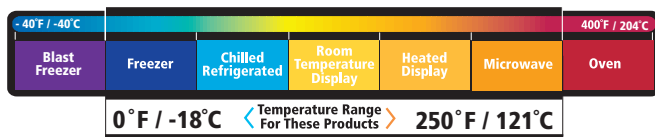
FEATURES	BENEFITS
TFPP Talc-Filled Polypropylene	40% average talc blended material with polypropylene reduces plastic usage
Exceptional Temperature Endurance	Microwaveable reheating up to 250° F (121° C)
SmartLock® Closure System	Audible "click" indicates a secure closure
Stackability	Helps multiple orders stack easily
Textured Sidewalls	Provides more secure handling
Soak Through Resistance	Resists grease, moisture and helps eliminate messy leaking
Optimized Cube Utilization Packs	Efficient case packs for shipping
5 Popular Sizes	Fits any size "To-Go" applications

*This product is not compostable



Specifications

Item Number	Description	Capacity (fl. Oz.)	Dimensions (in inches)	Case		Cases/ Unit Load
				Cube	Weight	
0CN8-0600-0000	1-Cmpt. SmartLock® Sandwich Hinged Container	16	5.95" x 5.75" x 3.25"	3.05	24.10	16
0CN8-0801-0000	1-Cmpt. SmartLock® Medium Hinged Container	32	8.3" x 8.3" x 3.4"	2.87	23.07	18
0CN8-0803-0000	3-Cmpt. SmartLock® Medium Hinged Container	4/4/14	8.3" x 8.3" x 3.4"	2.87	24.31	18
0CN8-0901-0000	1-Cmpt. SmartLock® Large Hinged Container	42	8.87" x 9.3" x 3.3"	1.87	14.57	30
0CN8-0903-0000	3-Cmpt. SmartLock® Large Hinged Container	6/6/18	8.87" x 9.3" x 3.3"	1.54	14.57	30



PP (0°F/18°C - 250°F/121°C)

These guidelines are supplied to assist you in determining the proper use of Pactiv products. They are based upon testing and published guidelines and are reliable in most applications. However, because every food supplier's recipes, ingredients, processes and supply chain is unique, these guidelines are not a substitute for product testing. Confirmation of product acceptability under your specific conditions of use must be done by you.

